

DC/10 circular flat panel speakers

DC/10 CIRCULAR FLAT PANEL SPEAKERS



CARATTERISTICHE

Circular flat panel speaker.

Materiali di costruzione

- Upper part: aluminum.
- Lower part: galvanized steel.

Color

Top and bottom: white RAL 9010 (epoxy powder coating).

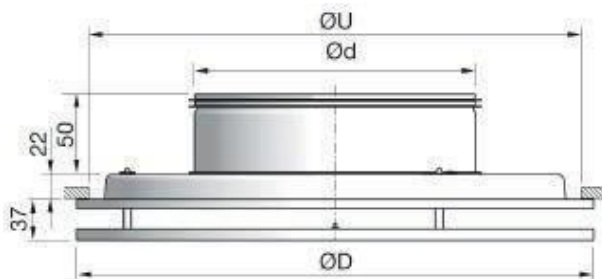
Fixing methods

- Directly to dedicated plenum or circular duct.
- To the suspended ceiling by means of 4 fixing brackets.

ACCESSORIES (optional)

- Circular calibration damper made of galvanized sheet metal series -SDT.
- Set of 4 galvanized sheet metal brackets for ceiling mounting series -SDM.

DIMENSIONAL

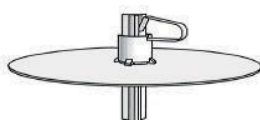


Code	Nominal diameter [mm]	Ø D Outer diameter [mm]	Ø U Measure hole in the c/ceiling	Ø d Diffuser neck diameter [mm]
-DC/10100	100	240	200	100
-DC/10125	125	240	200	125
-DC/10160	160	300	260	160
-DC/10200	200	360	320	200
-DC/10250	250	460	420	250
-DC/10315	315	540	500	315
-DC/10400	400	540	500	400

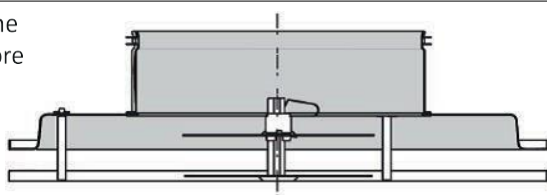
QUICK SELECTION TABLE

Code	Effective area	Flow rate (m ³ /h) with v = 1.5 m/s	Flow rate (m ³ /h) with v = 2 m/s	Flow rate (m ³ /h) with v = 2.5 m/s	Flow rate (m ³ /h) with v = 3 m/s	Flow rate (m ³ /h) with v = 4 m/s
	[m ²]	Pressure drop: 4 Pa	Pressure drop: 5 Pa	Pressure drop: 7 Pa	Pressure drop: 10 Pa	Pressure drop: 19 Pa
-DC/10100	0.0100	54	72	90	108	144
-DC/10125	0.0110	60	80	100	120	158
-DC/10160	0.0170	90	120	150	180	240
-DC/10200	0.0230	125	166	208	249	331
-DC/10250	0.0300	162	216	270	324	432
-DC/10315	0.0370	200	266	333	400	533
-DC/10400						

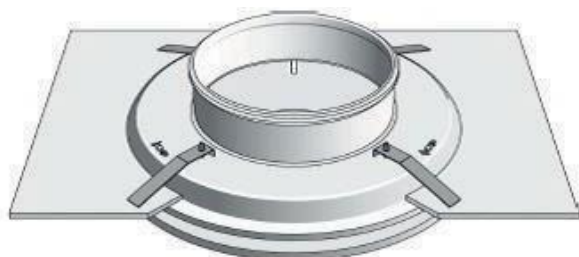
Circular calibration damper made of galvanized sheet metal mod. SDT---



Particolare posizione serranda nel diffusore



Set of 4 galvanized sheet metal brackets for fixing ceiling speakers mod. SDM---



Note: For the completion of the code of the various accessories above substitute --- for the nominal diameter (Ø100, Ø125, Ø160, Ø200, Ø250, Ø315, Ø400) of the relative circular flat panel diffuser.